



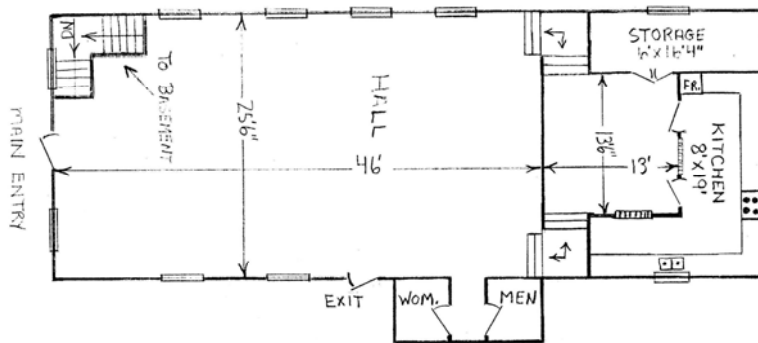
**BLOOMFIELD TOWN HALL**  
**289 Main Street**  
**Bloomfield Ontario**

**History of Bloomfield Town Hall**

The Bloomfield as a village was incorporated in 1906. It was around this time that the hall was used for municipal purposes. Since amalgamation the hall has been used as a community hall. The hall fits with the surrounding main street look to the community with various commercial buildings.

**Bloomfield Town Hall Today**

Bloomfield Town Hall lower level is home to Taste! and also to a Visitor Information Centre. The hall is used on a regular basis by the Field Naturalists, the Bloomfield and Area Business Association. The Bloomfield/Hallowell Recreation Committee provides a variety of special events including the Santa Claus Parade and Breakaway that are centred from the hall.



**BLOOMFIELD TOWN-HALL**

25'6" x 46' = 1173' SQ.FT.

**Bloomfield Town Hall Key Information**

Seating Capacity: 84

Other Key Features:

- Kitchen
- Bar
- Sound
- Accessible
- Stage
- Lighting
- TV/VCR
- New: Projection system

For Bookings contact the Recreation, Parks and Culture Department at 613-476-2148 or [bookings@pecounty.on.ca](mailto:bookings@pecounty.on.ca)