



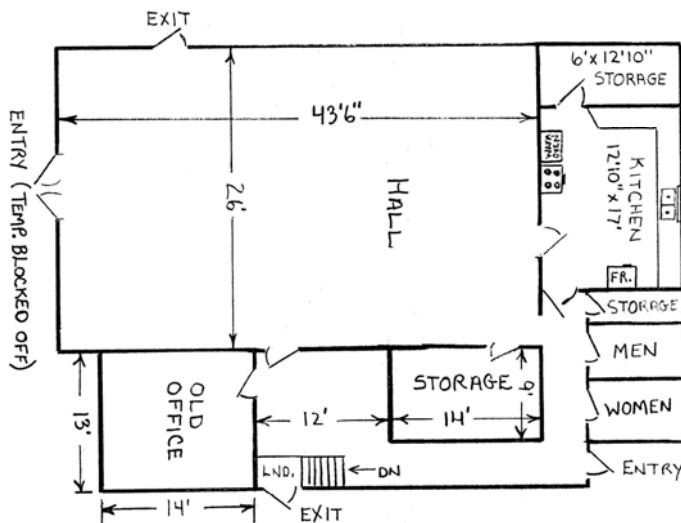
ATHOL TOWN HALL
1685 County Road 10
Cherry Valley Ontario

History of Athol Town Hall

Built as a hall in 1873, the Athol Town Hall was a place where the community held many functions. In the 1980's, the municipal offices were added at the rear of the building. Following amalgamation the building has been used as a community hall.

Athol Town Hall Today

Athol Town Hall remains the focus of the community especially in Cherry Valley. There are many groups and organizations that utilize this hall. The Athol Ward Recreation Committee runs a variety of special events included a Pork BBQ, Breakfast with Santa and movie nights.



ATHOL TOWN-HALL
 26' x 43'6" = 1131 SQ.FT.

Athol Town Hall Key Information

Seating Capacity: 80

Other Key Features:
 Kitchen
 Sound
 Accessible

For Bookings contact the Recreation, Parks and Culture Department at 613-476-2148 or bookings@pecounty.on.ca